

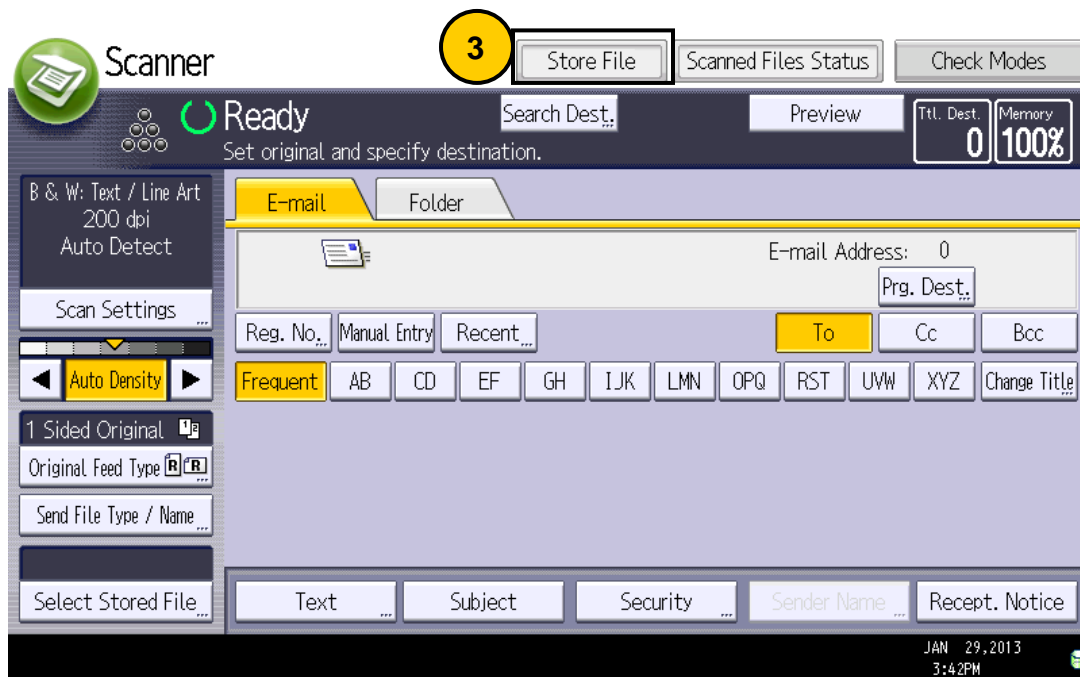
1. Place original(s) face up in the Auto Document Feeder (ADF) or face down on the platen glass. Insert flash drive on the side of the control panel.



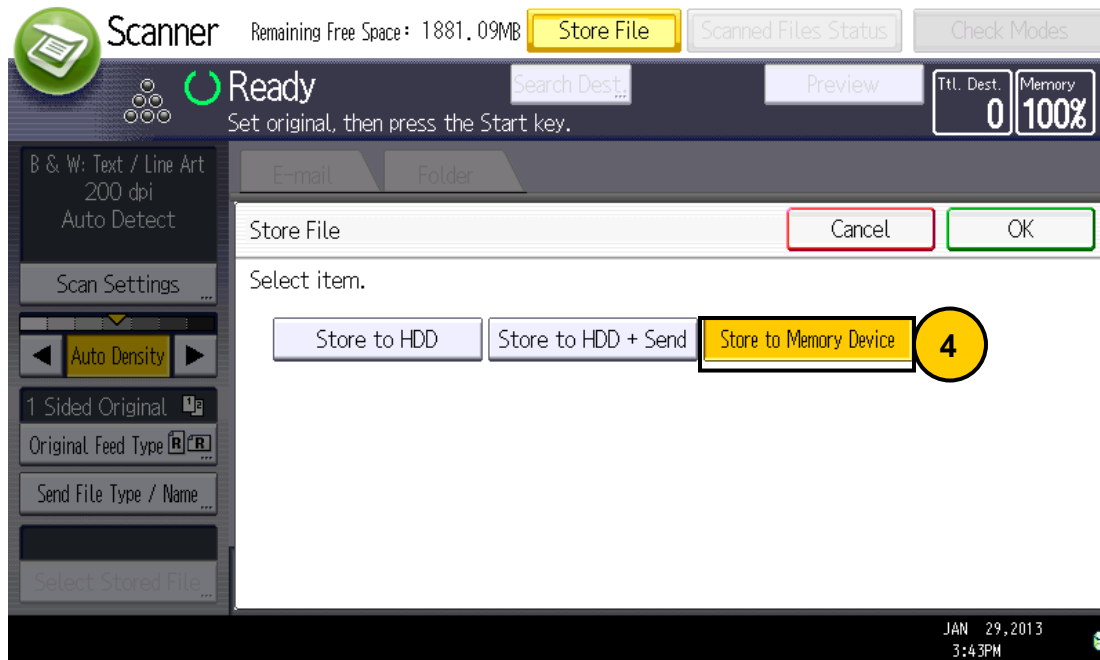
2. Select the **Scanner** function from the Home Screen.



3. Select **Store File**.



4. Select **Store to Memory Device**.



5. Press the green **Start** button. When using the platen glass, press **#** after scanning the last original.

6. Wait for the prompt to remove flash drive.